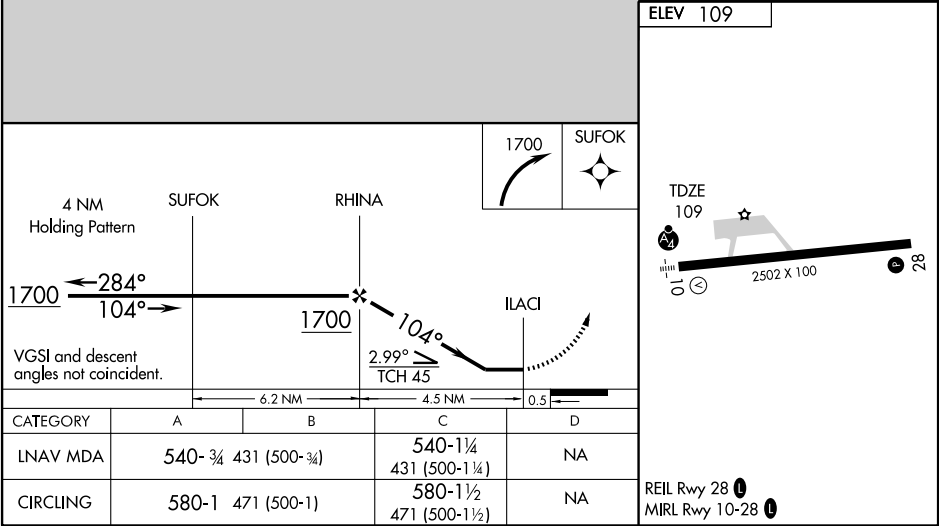
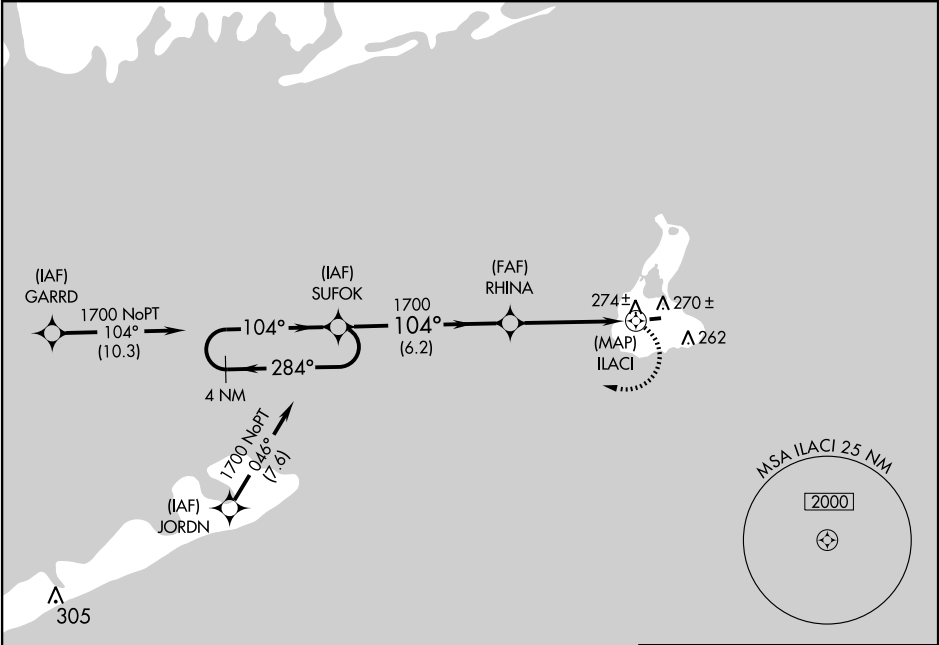


APP CRS 104°	Rwy Idg TDZE Apt Elev	2502 109 109
------------------------	-----------------------------	---

RNAV (GPS) RWY 10
BLOCK ISLAND STATE (BID)

Inoperative table does not apply to Cat C. NA DME/DME RNP-0.3 NA.	MALSF	MISSED APPROACH: Climbing right turn to 1700 direct SUFOK WP and hold.
--	-------	--

AWOS-3 134.775	PROVIDENCE APP CON ★ 125.75 319.2	CLNC DEL 120.1	UNICOM 123.0 (CTAF)
--------------------------	---	--------------------------	-------------------------------




NE-1,25 NOV 2004

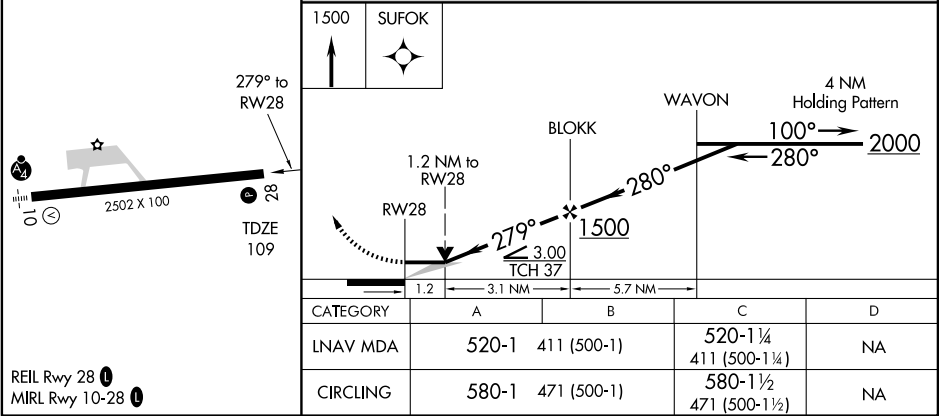
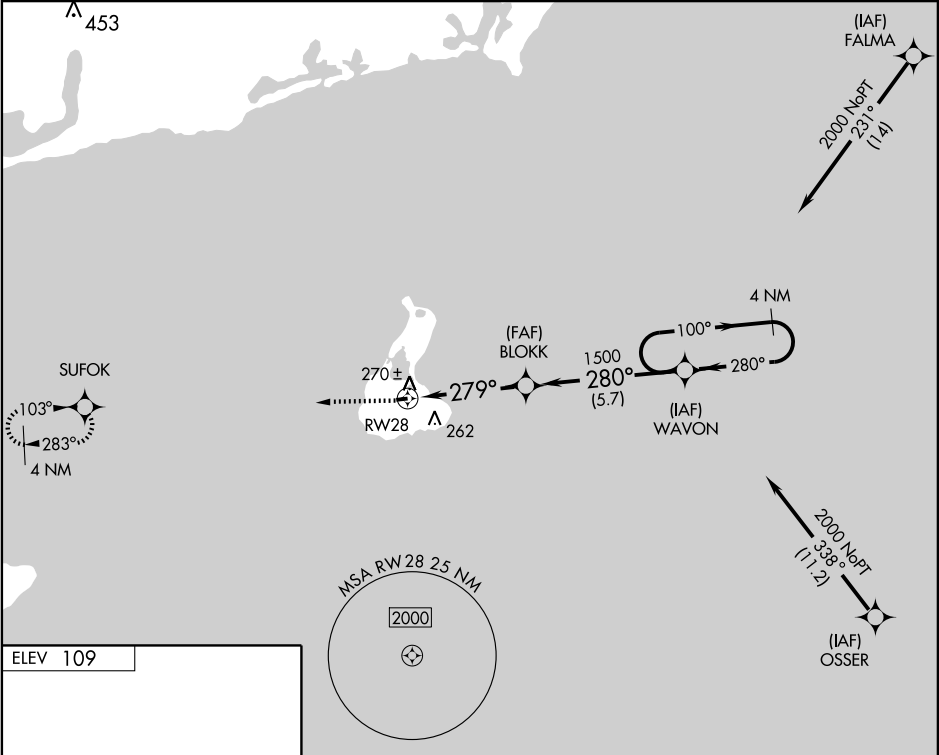
NE-1,25 NOV 2004

APP CRS	Rwy Idg	2502
279°	TDZE	109
	Apt Elev	109

RNAV (GPS) RWY 28
BLOCK ISLAND STATE (BID)

 NA	GPS or RNP -0.3 required. DME/DME RNP -0.3 NA.	MISSED APPROACH: Climb to 1500 direct to SUFOK WP and hold.
---	---	--

AWOS-3 134.775	PROVIDENCE APP CON ★ 125.75 319.2	CLNC DEL 120.1	UNICOM 123.0 (CTAF) 
-------------------	--------------------------------------	-------------------	--





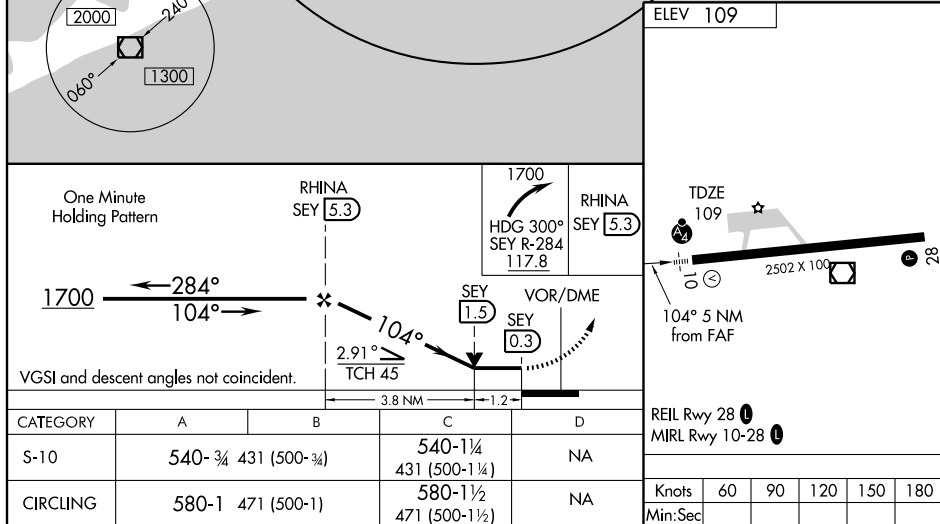
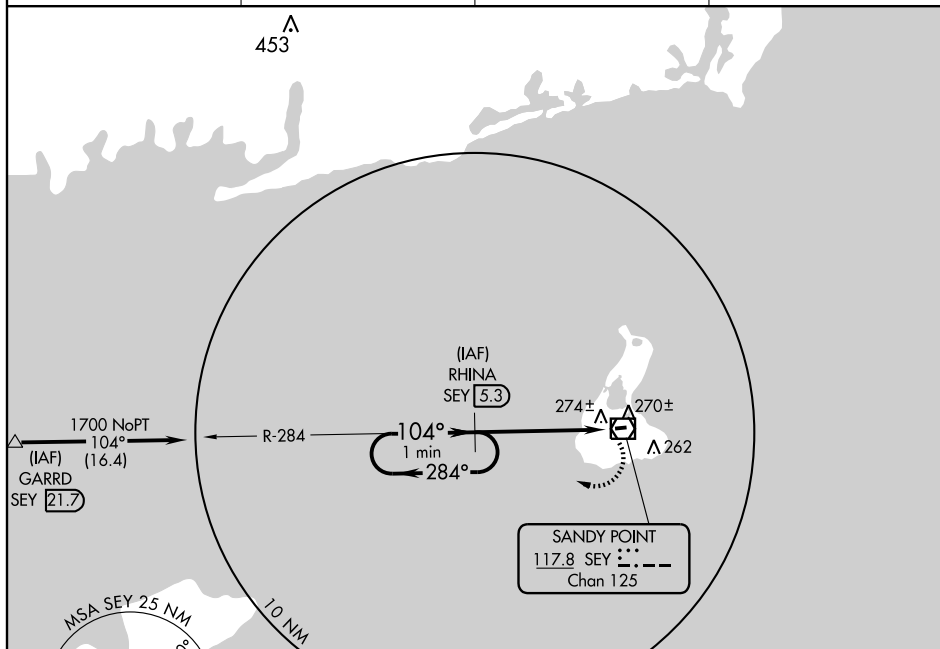
NE-1,25 NOV 2004

NE-1,25 NOV 2004

VOR/DME SEY 117.8 Chan 125	APP CRS 104°	Rwy Idg 2502 TDZE 109 Apt Elev 109
--	------------------------	---

VOR/DME RWY 10
BLOCK ISLAND STATE (BID)

 Inoperative table does not apply to Cat C.		MALSF 	MISSED APPROACH: Climbing right turn to 1700 via heading 300° and SEY R-284 to RHINA/SEY 5.3 DME and hold.	
AWOS-3 134.775	PROVIDENCE APP CON ★ 125.75 319.2	CLNC DEL 120.1		UNICOM 123.0 (CTAF) 0

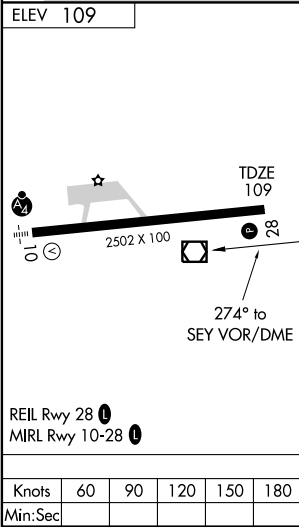
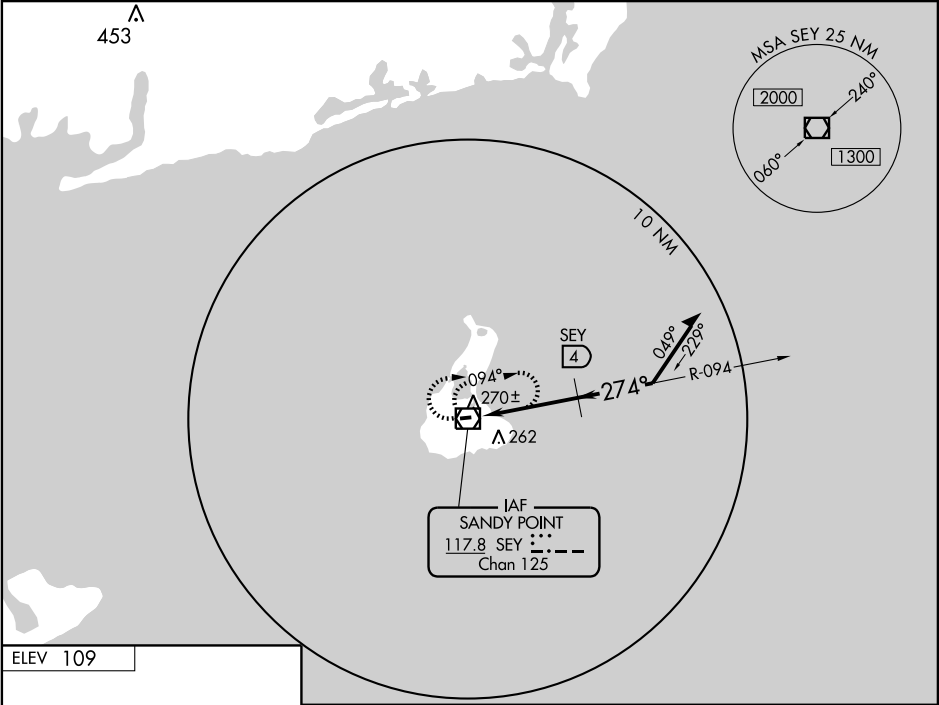






VOR/DME SEY	APP CRS	Rwy Idg	2502
117.8	274°	TDZE	109
Chan 125		Apt Elev	109

VOR RWY 28
BLOCK ISLAND STATE (BID)

	MISSED APPROACH: Climbing right turn to 1500 in SEY VOR/DME holding pattern.
--	--

AWOS-3 134.775	PROVIDENCE APP CON ★ 125.75 319.2	CLNC DEL 120.1	UNICOM 123.0 (CTAF)
-------------------	--------------------------------------	-------------------	------------------------



1500	SEY  <u>117.8</u>	VOR/DME	Remain within 10 NM	
	 <u>4</u>	094° 274° <u>600</u>	<u>1500</u>	
				
CATEGORY	A	B	C	D
S-28	600-1	491 (500-1)	600-1¼ 491 (500-1¼)	NA
CIRCLING	600-1	491 (500-1)	600-1½ 491 (500-1½)	NA
DME MINIMUMS				
S-28	520-1	411 (500-1)	520-1¼ 411 (500-1¼)	NA
CIRCLING	580-1	471 (500-1)	580-1½ 471 (500-1½)	NA

TAKE-OFF MINIMUMS AND (OBSTACLE) DEPARTURE PROCEDURES

INSTRUMENT APPROACH PROCEDURE CHARTS

IFR TAKE-OFF MINIMUMS AND (OBSTACLE) DEPARTURE PROCEDURES

Civil Airports and Selected Military Airports

ALL USERS: Airports that have Departure Procedures (DPs) designed specifically to assist pilots in avoiding obstacles during the climb to the minimum enroute altitude, and/or airports that have civil IFR take-off minimums other than standard, are listed below. Take-off Minimums and Departure Procedures apply to all runways unless otherwise specified. Altitudes, unless otherwise indicated, are minimum altitudes in MSL.

DPs specifically designed for obstacle avoidance are described below in text, or published separately as a graphic procedure. If the (Obstacle) DP is published as a graphic procedure, its name will be listed below, and it can be found in either this volume (civil), or a separate Departure Procedure volume (military), as appropriate. Users will recognize graphic obstacle DPs by the term "(OBSTACLE)" included in the procedure title; e.g., TETON TWO (OBSTACLE). If not assigned another DP or radar vector by ATC, this procedure may be flown to ensure obstacle clearance.

Graphic DPs designed by ATC to standardize traffic flows, ensure aircraft separation and enhance capacity are referred to as "Standard Instrument Departures (SIDs)". SIDs also provide obstacle clearance and are published under the appropriate airport section. ATC clearance must be received prior to flying a SID.

CIVIL USERS NOTE: FAR 91 prescribes standard take-off rules and establishes take-off minimums for certain operators as follows: (1) Aircraft having two engines or less - one statute mile. (2) Aircraft having more than two engines - one-half statute mile. These standard minima apply in the absence of any different minima listed below.

MILITARY USERS NOTE: Civil (nonstandard) take-off minima are published below. For military take-off minima, refer to appropriate service directives.

NAME TAKE-OFF MINIMUMS

AUBURN-LEWISTON, ME

AUBURN-LEWISTON MUNI

TAKE-OFF MINIMUMS: **Rwy 4**, 300-1 or std. with a min. climb of 360' per NM to 400. **Rwy 17**, 300-1 or std. with a min. climb of 265' per NM to 900. **Rwy 22**, 300-1 or std. with a min. climb of 310' per NM to 1500. **Rwy 35**, 300-1 or std. with a min. climb of 220' per NM to 400.

DEPARTURE PROCEDURE: **Rwy 17**, climb runway heading to 900 before turning northeast. **Rwy 22**, climb to 1500 direct LEWIE LOM. Cross LEWIE LOM at 1500' or above before turning southwest.

AUGUSTA, ME

AUGUSTA STATE

TAKE-OFF MINIMUMS: **Rwys 8, 35**, 300-1. **Rwy 26**, 400-1 or std. with a min. climb of 250' per NM to 700.

BAR HARBOR, ME

HANCOCK COUNTY-BAR HARBOR

TAKE-OFF MINIMUMS: **Rwys 22, 35**, 300-1.

DEPARTURE PROCEDURE: **Rwy 17**, climbing right turn via heading 220° to 2000 before proceeding on course. **Rwy 22**, climb runway heading to 1900 before turning eastbound.

NAME TAKE-OFF MINIMUMS

BARRE-MONTPELIER, VT

EDWARD F. KNAPP STATE

TAKE-OFF MINIMUMS: **Rwy 17**, 400-1. **Rwy 23**, 500-2 or std. with a min. climb of 400' per NM to 2600.

DEPARTURE PROCEDURE: **Rwy 5**, climb runway heading to 2100, then climbing right turn to 3900 direct MPV VOR/DME. **Rwy 17**, climb direct to MPV VOR/DME, climb in holding pattern (N, right turns, 160° inbound) to 3500 before proceeding on course. **Rwy 23**, climbing left turn to 3500 direct MPV VOR/DME.

Rwy 35, climb runway heading to 1600, then climbing right turn to 3900 direct MPV VOR/DME.

BEDFORD, MA

LAURENCE G. HANSCOM FIELD

TAKE-OFF MINIMUMS: **Rwys 11, 29**, 300-1. **Rwy 5**, 300-1 or std. with a min. climb of 210' per NM to 400. **Rwy 23**, 300-1 or std. with a min. climb of 320' per NM to 460.

DEPARTURE PROCEDURE: **Rwy 11**, climb runway heading to 600 before turning.

BELFAST, ME

BELFAST MUNI

TAKE-OFF MINIMUMS: **Rwy 33**, 300-1 or std. with a min. climb of 270' per NM to 600.

25 NOV 2004

TAKE-OFF MINIMUMS AND (OBSTACLE) DEPARTURE PROCEDURES

TAKE-OFF MINIMUMS AND (OBSTACLE) DEPARTURE PROCEDURES

BENNINGTON, VT

WILLIAM H. MORSE STATE

TAKE-OFF MINIMUMS: **Rwy 13**, 2200-3, restricted to CAT A and B only, CAT C NA. **Rwy 31**, 500-2 or std. with a min. climb of 240' per NM to 1400.

DEPARTURE PROCEDURE: **Rwy 13**, climbing left turn direct to CAM VORTAC, continue climb in hold to 3500 before proceeding on course. **Rwy 31**, climbing right turn direct CAM VORTAC continue climb in hold to 3500 before proceeding on course.

BERLIN, NH

BERLIN MUNI

TAKE-OFF MINIMUMS: **Rwys 18, 36**, 1000-2.

DEPARTURE PROCEDURE: **Rwys 18, 36**, climb visually over the airport to 2100, continue climb to 3000 via BML R-192, then climbing right turn to 4400 direct BML VOR/DME and hold. Climb in holding pattern (N, left turns, 192° inbound) to MEA before proceeding on course.

BEVERLY, MA

BEVERLY MUNI

NOTE: **Rwy 9**, multiple trees beginning 82' from departure end of runway, 50' left of centerline, up to 114' AGL/232' MSL. Tree 258' from departure end of runway, 47' right of centerline, 87' AGL/192' MSL. **Rwy 16**, multiple trees beginning 286' from departure end of runway, 213' left of centerline, up to 80' AGL/148' MSL. Trees, stack and obstruction light on buildings beginning 121' from departure end of runway, 4' right of centerline up to 90' AGL/194' MSL. **Rwy 27**, multiple trees and antenna beginning 8' from departure end of runway, 144' left of centerline, up to 98' AGL/217' MSL, multiple trees beginning 42' from departure end of runway, 84' right of centerline up to 97' AGL/160' MSL. **Rwy 34**, multiple trees beginning 437' from departure end of runway, 5' left of centerline, 91' AGL/188' MSL. Multiple trees 509' from departure end of runway, 1' right of centerline, 80' AGL/174' MSL.

BLOCK ISLAND, RI

BLOCK ISLAND STATE

TAKE-OFF MINIMUMS: **Rwy 28**, 300-1.

DEPARTURE PROCEDURE: **Rwy 28**, climb runway heading at 250° per NM to 400 feet before turning.

BOSTON, MA

GENERAL EDWARD LAWRENCE LOGAN INTL

TAKE-OFF MINIMUMS: **Rwy 4L**, 300-1 or std. with a min. climb of 340' per NM to 300. **Rwy 4R**, 300-1 or std. with a min. climb of 320' per NM to 300. **Rwy 9**, 300-1 or std. with a min. climb of 230' per NM to 300. **Rwy 22L**, 300-1 or std. when tower reports no tall vessels in departure area. **Rwy 22R**, 300-1 or std. with a min. climb of 220' per NM to 300. **Rwy 27**, 900-1 or std. with a min. climb of 440' per NM to 1100. **Rwy 33L**, 500-1 or std. with a min. climb of 250' per NM to 500.

DEPARTURE PROCEDURE: **Rwys 22L, 22R**, climb runway heading to 700 before turning right. **Rwy 33L**, climb runway heading to 700 before turning left.

BRIDGEPORT, CT

IGOR I. SIKORSKY MEMORIAL

TAKE-OFF MINIMUMS: **Rwy 29**, 600-2 or std. with a min. climb of 280' per NM to 700.

NOTE: **Rwy 6**, cross departure end of runway at or above

34' AGL/42' MSL. **Rwy 11, 26'** AGL/41' MSL road/vehicle 207' from departure end of runway. Cross departure end of runway at or above 35' AGL/43' MSL.

Rwy 24, cross departure end of runway at or above 23' AGL/30' MSL. **Rwy 29**, cross departure end of runway at or above 35' AGL/45' MSL.

BRUNSWICK NAS, ME (KNHZ)

BRUNSWICK, ME

Rwy 1L, CAUTION: Cross DER at or above 35' AGL/110' MSL.

Rwy 1R, CAUTION: Cross DER at or above 20' AGL/94' MSL.

BURLINGTON, VT

BURLINGTON INTL

TAKE-OFF MINIMUMS: **Rwy 15**, 1000-2 or std. with a min. climb of 260' per NM to 1600. **Rwy 19**, 700-2 or std. with a min. climb of 220' per NM to 1200.

DEPARTURE PROCEDURE: **Rwy 1**, climb runway heading to 800, then climbing left turn direct BTW VORTAC before proceeding on course. **Rwys 15, 19**, climbing right turn direct BTW VORTAC, climb in holding pattern (SW, left turns, 036° inbound) to 4100 before proceeding on course. **Rwy 33**, climbing left turn direct BTW VORTAC, climb in holding pattern (SW, left turns, 036° inbound) to 4100 before proceeding on course.

CARIBOU, ME

CARIBOU MUNI

TAKE-OFF MINIMUMS: **Rwys 1, 11, 19, 29**, 300-1.

CLAREMONT, NH

CLAREMONT MUNI

TAKE-OFF MINIMUMS: **Rwy 11**, 500-2. **Rwy 29**, 700-2.

DEPARTURE PROCEDURE: **Rwys 11, 29**, climb in the CNH NDB holding pattern, (SW, right turns, 044° inbound) to 2800 before proceeding on course.

CONCORD, NH

CONCORD MUNI

TAKE-OFF MINIMUMS: **Rwy 12**, 500-1 or std. with a min. climb of 350' per NM to 1300. **Rwy 17**, 300-1 or std. with a min. climb of 220' per NM to 1200. **Rwy 30**, 800-3 or std. with a min. climb of 260' per NM to 1300. **Rwy 35**, 300-1 or std. with a min. climb of 320' per NM to 1300.

DEPARTURE PROCEDURE: **Rwy 12**, climb to 900 then climbing right turn to CON VORTAC before proceeding on course. **Rwy 17**, climb to 1200 before turning on course. **Rwy 35**, climb to 1300 before turning on course.